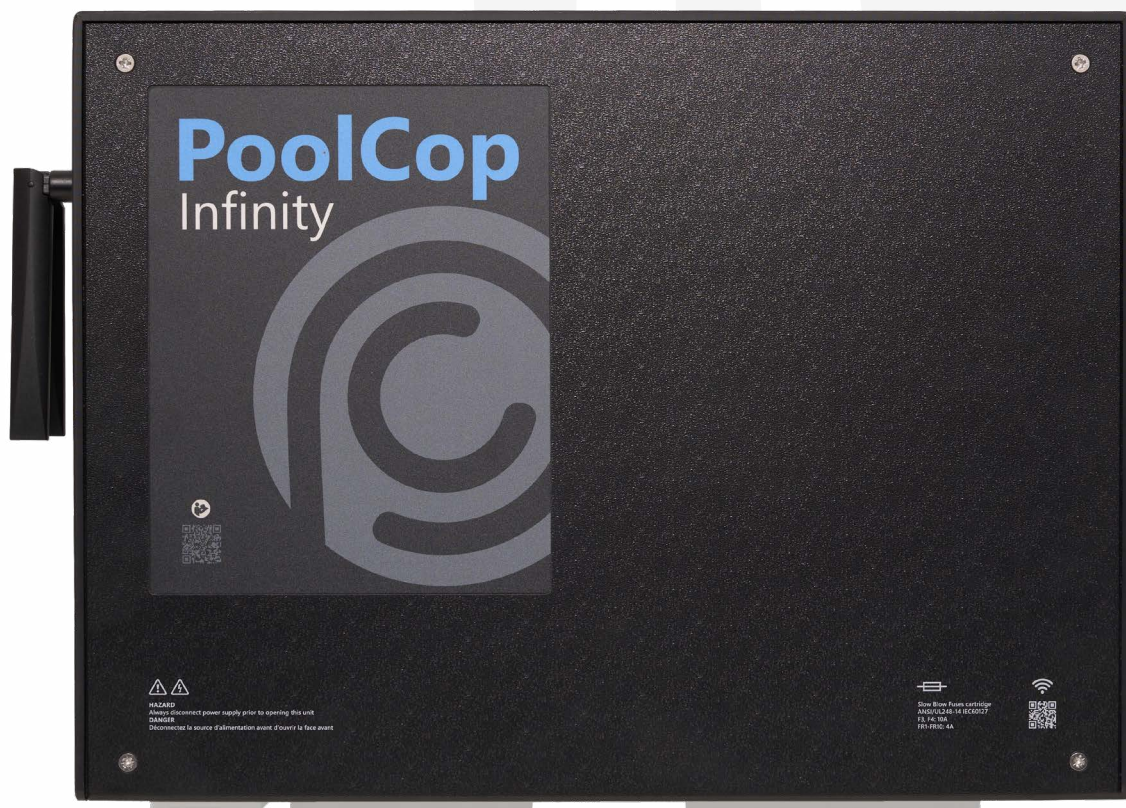




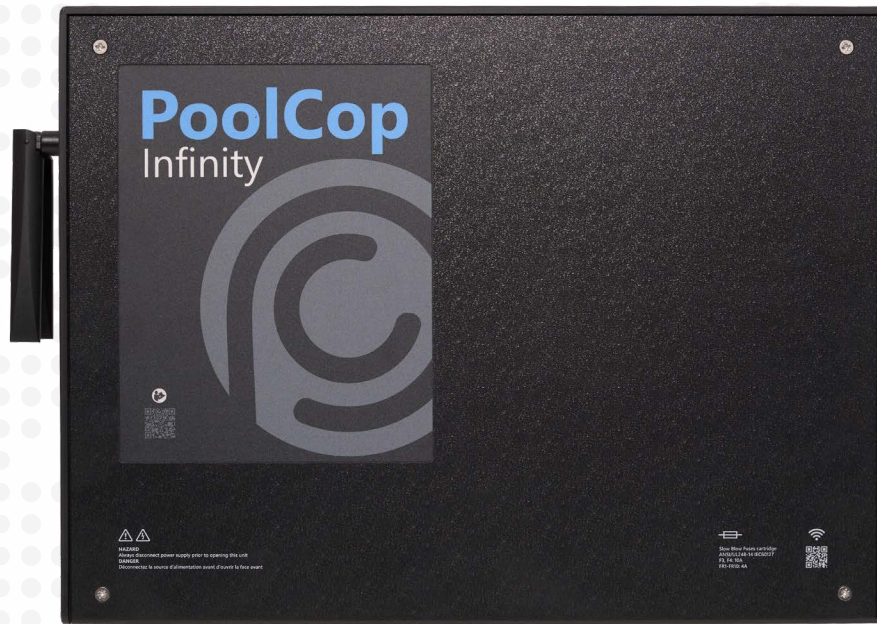
PoolCop

Always. Better. Blue.



Comprehensive
Pool Management

DATA + AUTOMATION



*Streamline operations
and enhance efficiency
with predictive intelligence
and total automation.*

ALL-IN-ONE POWER AND PRECISION FOR COMPLETE POOL MANAGEMENT

Designed for demanding residential, commercial, and specialty pools, Infinity integrates comprehensive data acquisition, intelligent automation, and predictive analytics in an expandable, all-in-one platform.

Engineered to maximize control, efficiency, and adaptability, PoolCop Infinity empowers professionals and owners to deliver exceptional care and optimize every pool experience.

Power, Precision, Performance

Data Acquisition & Monitoring

Pre-defined Inputs



WATER
LEVEL



WATER & AIR
TEMPERATURE



WATER
PRESSURE



FLOW
RATE

Additional



12
DIGITAL
INPUTS

Built-In Advantages

TA
ESTIMATION

DUAL
PUMP
MONITORING

DOUBLE
FILTRATION
FLOW RATE
& PRESSURE

4
MODBUS
CONNECTIONS

DMX
LIGHTING
READY

Automation

Pre-defined Relays



pH
CONTROL



DISINFECTION
CONTROL



REFILL
VALVE



8
STANDARD



+7
OPTIONAL



INTEGRATED
WIFI



INTEGRATED
ETHERNET



4G ROUTER
OPTION



CLOUD
TECHNOLOGY



SMART PROPRIETARY
ALGORITHMS

Enhanced Connectivity

Integrated Technology

DISTINCT QUALITIES

ADVANCED DATA ACQUISITION:

Continuous, high-precision monitoring with dedicated inputs for water chemistry, temperature, pressure, flow rate, and water level. Twelve additional inputs support optional sensors for cover status, drum level, flood detection, and other data points—delivering complete system awareness for pools of any complexity.

RELIABLE CONNECTIVITY:

WiFi, Ethernet, and 4G options guarantee a stable network and uninterrupted, real-time data flow to the cloud, keeping pool status visible at all times—even in demanding installation sites.

INTELLIGENT AUTOMATION & ALERTS:

Early leak detection, weather dependent refill management, overdosing security, anti-freeze protection, and filter cleaning notifications maximize safety and operational efficiency.

OPEN PLATFORM:

Fully adaptable for integration and future upgrades, compatible with third-party equipment, and suitable for both new pool builds and retrofits.

AUTOMATED WATER QUALITY & EQUIPMENT CONTROL:

Fully automated pH and disinfectant dosing, and control of all major pool equipment—including single and multi-speed pumps, filtration cycles, automatic valves, pool heating, ACO dosing, pool cleaners, and lighting, provide a complete solution for a perfectly balanced pool environment.

DUAL PUMP MONITORING & DOUBLE FILTRATION:

Controls and monitors two pumps and dual filtration circuits, optimizing flow rates and water pressure—essential for complex pool installations.

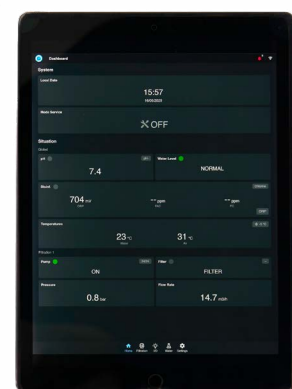
ENGINEERED FOR PERFORMANCE:

Next-generation processing power and expanded memory enable rapid data analysis and advanced system diagnostics. Ample capacity for analytics and reserved expansion slots anticipate future upgrades in pool care technology.



ONSITE CONFIGURATIONS

Pool settings are managed directly in the pump house using any connected device, via a direct link to the unit's built-in Wi-Fi.



MODULAR & SCALABLE

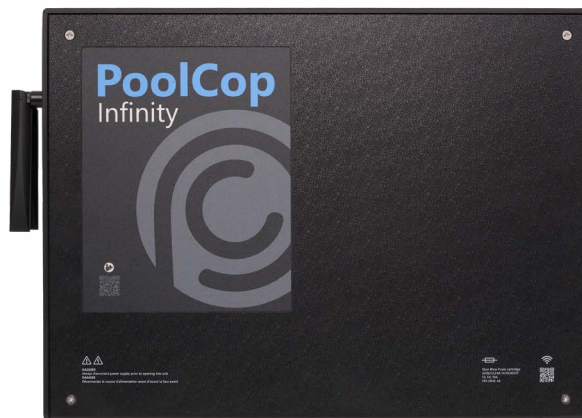
ADVANCED CONTROL FROM DAY ONE

Designed for automation enthusiasts and high-end setups, this system starts with disinfection control, data acquisition, and 8 built-in relays for equipment management.

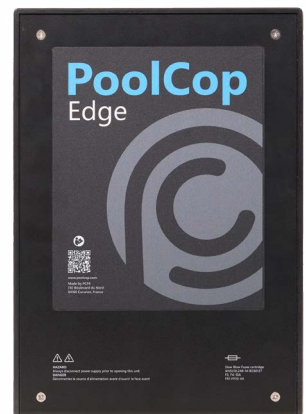
Scale up to 15 relays with an optional Edge Plus extension board.

NOTE: obligatory to control variable speed pumps.

Extend reach to 23 or 30 relays with an additional Edge/ Edge Plus module.



OPTIONAL



OPTIONAL



POOLCOP APPS



PROPOOLCOP

Tailored for professionals, ProPoolCop offers comprehensive data, remote control, and configuration management for all automated systems. Instantly access client portfolios, team scheduling, service planning, and historical analytics, while receiving actionable notifications and alerts for real-time diagnostics and seamless operations.



MYPOOLCOP

Created for pool owners, MyPoolCop features a streamlined interface displaying pool status—such as filtration pressure, water level, treatment, and temperature. Receive timely alerts for filter cleaning, leak detection, and low chemicals, along with intuitive access to pool and garden features, and easy uploads of water analysis results.



ADVANTAGES

POOL PROFESSIONALS

Complete Remote Control & Automation

Monitor, adjust, and optimize all pools from anywhere, reducing unnecessary visits.

Scalable for Any Installation

From a family pool to a multiple water body commercial installation, with 8 to 30 relay options, adapting to any project.

Enhanced Service Offering

A premium automation solution for high-end clients looking for the most advanced pool technology available.

POOL OWNERS

Total Pool Management

Controls everything from filtration, pumps, and water level to heating, lights and water features.

Maximized Efficiency & Savings

Smart automation optimizes filtration, water management and chemical dosing, reducing energy, water, and chemical use.

Luxury & Convenience

One system seamlessly manages any desired feature, ensuring the perfect pool experience with minimal effort.

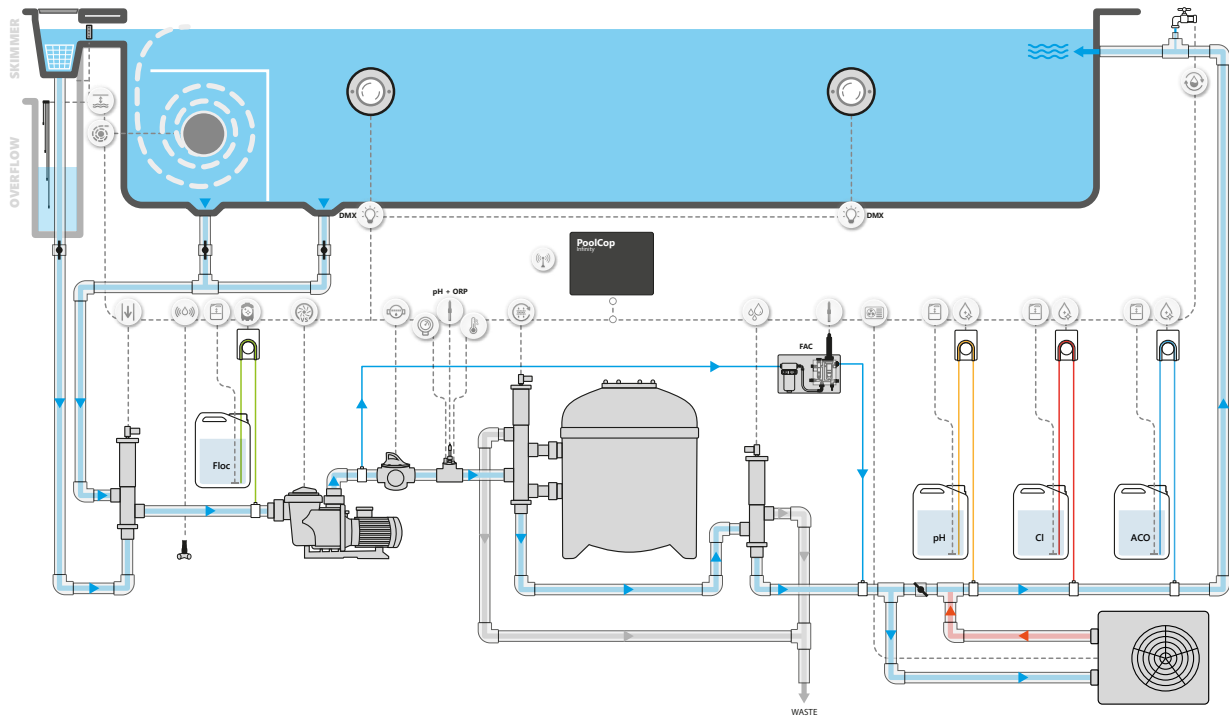


TECHNICAL SPECIFICATIONS

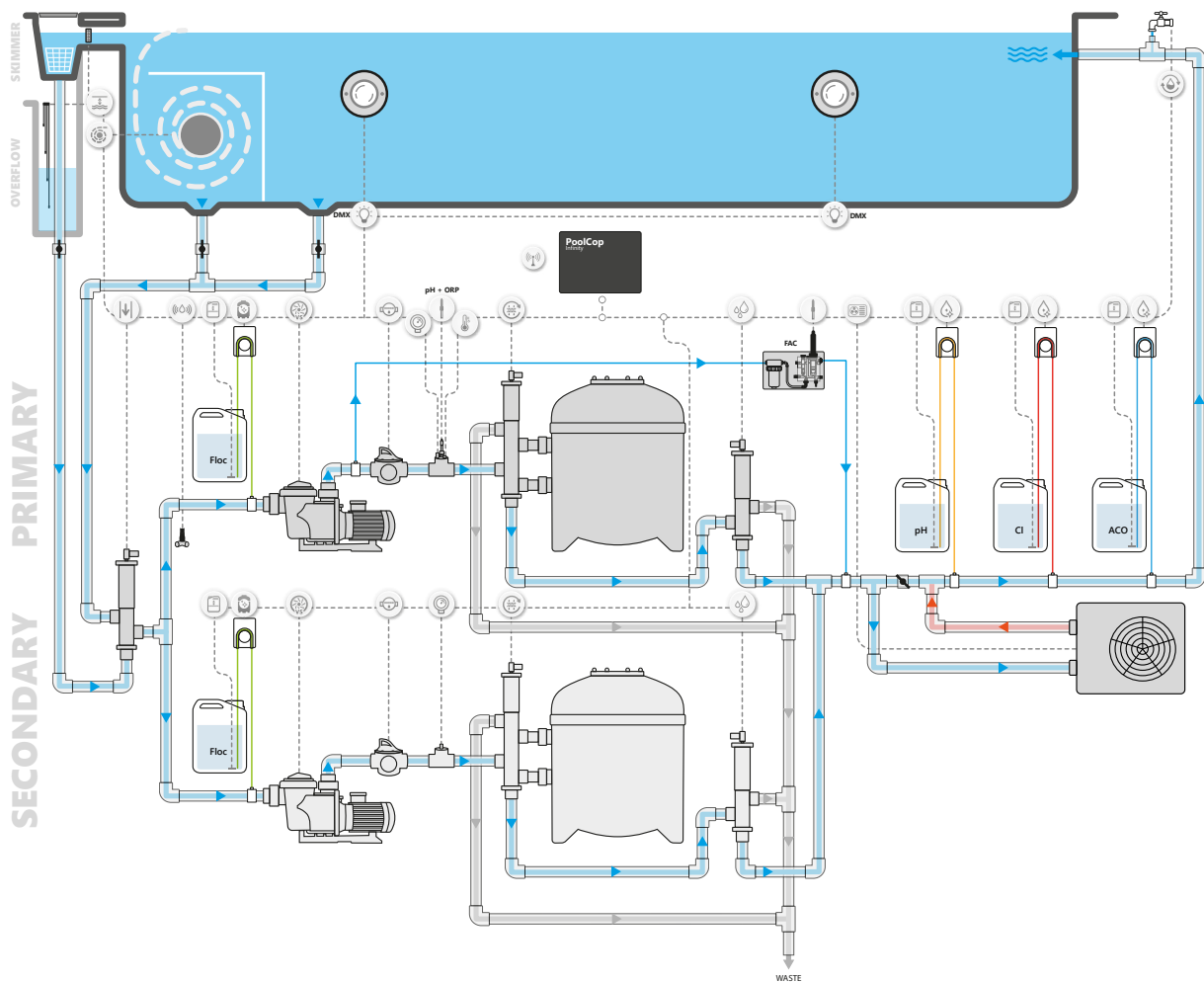
PoolCop Infinity

PoolCop Infinity 4G

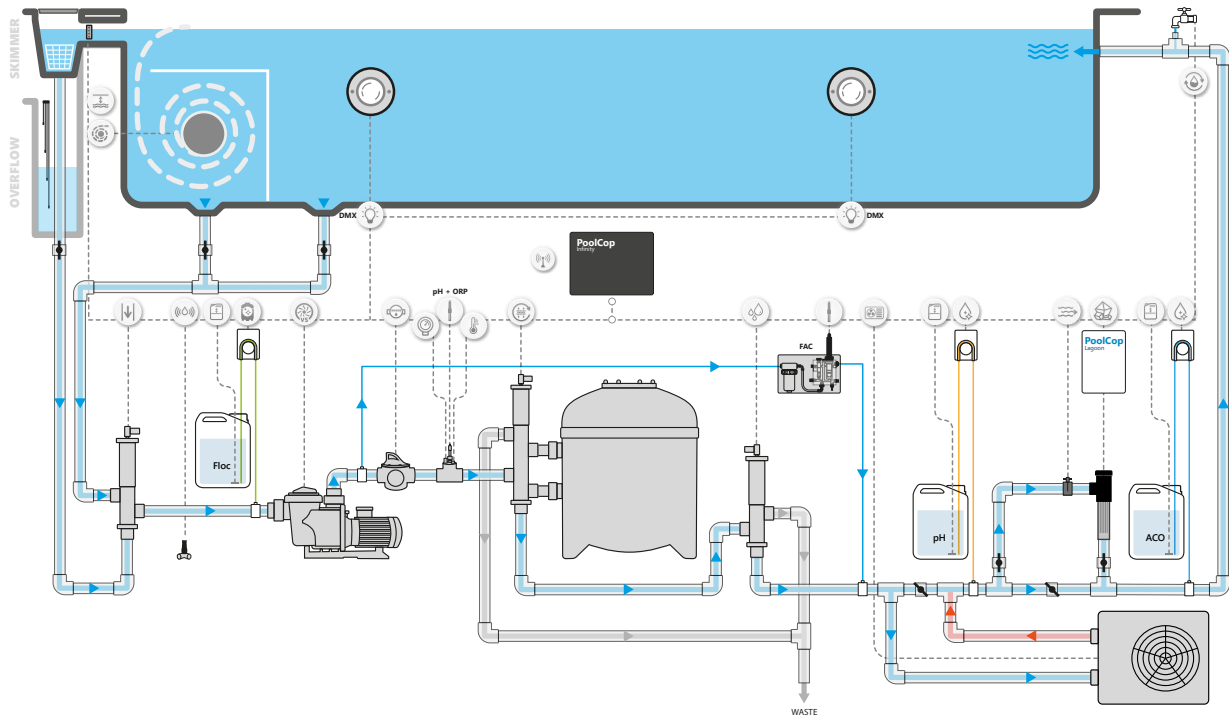
REFERENCE	200001	200002
COMPONENTS	<ul style="list-style-type: none">• PoolCop Infinity unit• Flow cell cap with water pressure, water temperature and pH-ORP sensor housings• Water pressure sensor• Water temperature sensor• Air temperature sensor• 2 antennas	<ul style="list-style-type: none">• PoolCop Infinity unit• Flow cell cap with water pressure, water temperature and pH-ORP sensor housings• Water pressure sensor• Water temperature sensor• Air temperature sensor• 2 antennas• 4G router
DIMENSIONS	420 x 320 X 110 mm (LxHxP) - 4 KG	
GUARANTEE	24 months	
DISPLAY AND CONTROLS	Via web interfaces and PoolCop Cloud	
POOLCOP INFINITY UNIT PROTECTION	IP54	
MAIN POWER SUPPLY	110 - 250 V.a.c. 50Hz-60Hz 10A	
POWER SUPPLY FLUCTUATIONS	+/- 10%	
MAINS FUSES	10A	
POWERED RELAY FUSES	4A	
OVERVOLTAGE CATEGORY	II	
USAGE	Indoor	
RELATIVE HUMIDITY	80% up to 31°C, linear decrease down to 50% at 45°C	
POLLUTION DEGREE	2	
ALTITUDE	2000m	
OPERATING TEMPERATURE	-5°C - 45°C (23°F - 113°F)	
PH / ORP SENSORS	530017 for Chlorine or Bromine - 530018 for Electrolysis	
MEASUREMENT RANGES	Air temperature: -30°C - 65°C (22°F - 149°F) Water pressure: -0.9 - 2.50 bars (-13 - 36 psi) Water temperature: 0 - 60° (32°F - 140°F) Water level: very high - high - normal - low pH S.U.: 4-14 ORP/Redox: 0 to 999mV Consumables level: normal - low	
PROGRAMMABLE RELAYS	pH: 1 relay, 0-250V.a.c. 4A Disinfection: 1 relay, 0-250V.a.c. 4A Auxiliaries: 8 powered relays, 0-250V.a.c. 4A	
PROGRAMMABLE INPUTS	12 potential free, open/closed action	
COMMUNICATION PORTS (MODBUS & DMX)	4 x ModBus, 1 x DMX : RS485	
COMPLIANCE, ACCREDITATION, CERTIFICATION	CE	
INSTALLATION COMPATIBILITY	New construction, renovation, or upgrade Residential and commercial pools and spas	
COMPATIBLE OPTIONS	<ul style="list-style-type: none">• Water level kit• Treatment packs: chlorine and salt• Poolcop edge extension module• Flow meter• Waste backup valve• Flooding detection• lot energy meter• Free available chlorine sensor• Free chlorine sensor• Total chlorine sensor• Third party automatic valves (besgo): clean, rinse & suction• Variable speed pump• Panel assembly	



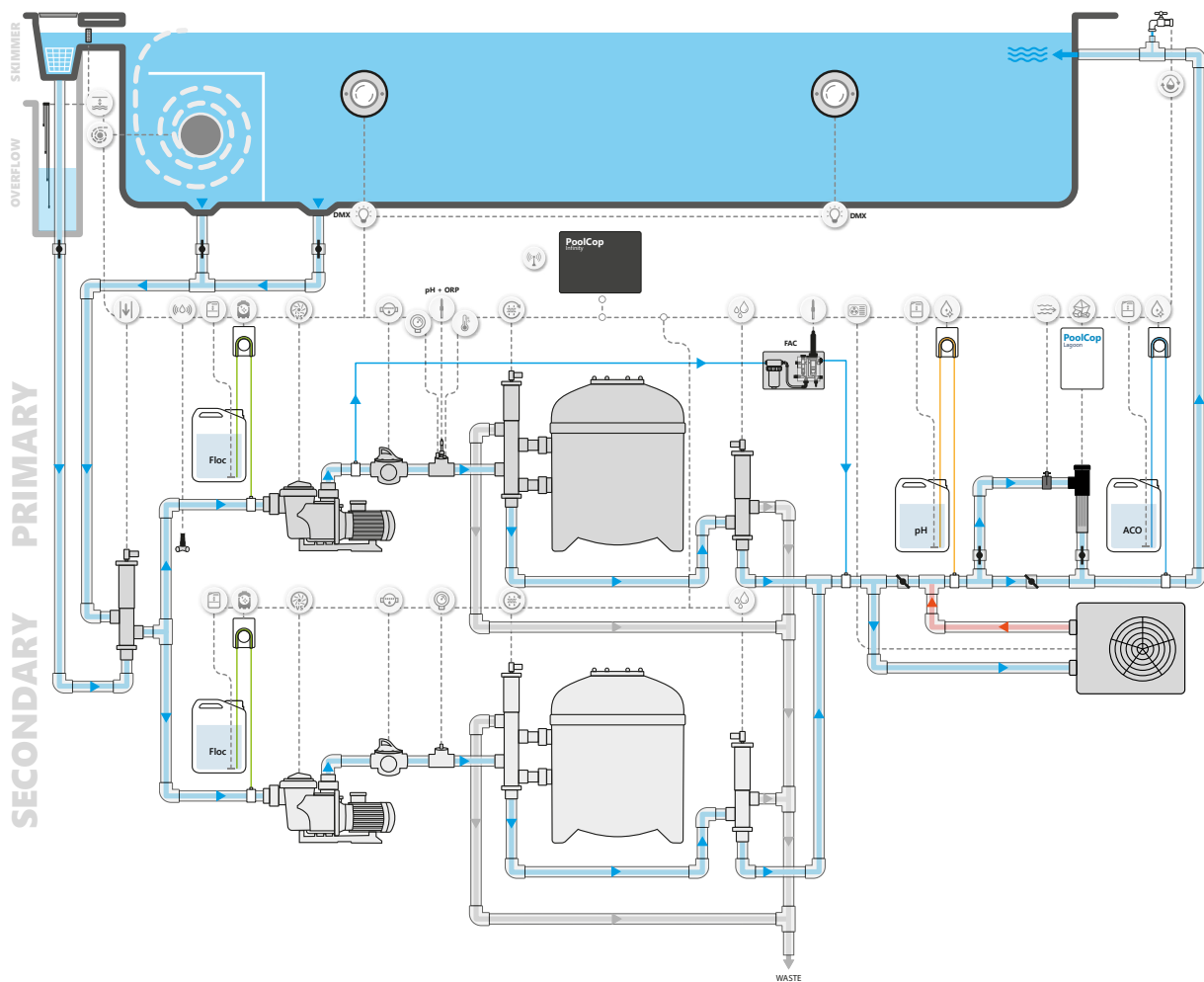
**POOLCOP INFINITY - SINGLE PUMP SET UP
WITH DATA AQUISITION, AUTOMATION & CHLORINE DISINFECTION**



**POOLCOP INFINITY - DUAL PUMP SET UP
WITH DATA AQUISITION, AUTOMATION & CHLORINE DISINFECTION**



**POOLCOP INFINITY - SINGLE PUMP SET UP
WITH DATA AQUISION, AUTOMATION & SALT DISINFECTION**



**POOLCOP INFINITY - DUAL PUMP SET UP
WITH DATA AQUISION, AUTOMATION & SALT DISINFECTION**

PoolCop

Always. Better. Blue.

PCFRPoolCop

PCFR SAS - 130 Boulevard du Nord, 84160 Cucuron, France
© PCFR SAS All Rights Reserved